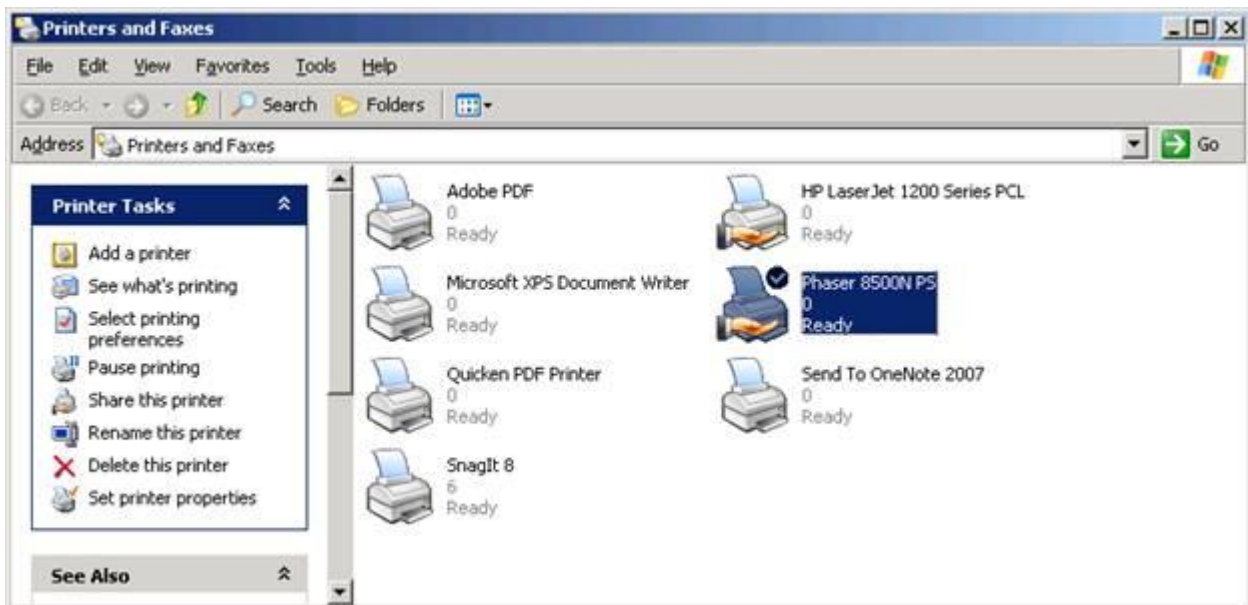


CertificateBlast Installation Guide

Step 1) Preparation

- Put your screen resolution in 1024x768.
 - Windows XP: http://www.microsoft.com/resources/documentation/windows/xp/all/proddocs/en-us/display_change_screen_resolution.mspx
 - Windows Vista: <http://windowshelp.microsoft.com/Windows/en-US/help/0386b009-5f30-45c7-80c8-ff0395cc24091033.mspx>
- If you are using CertificateBlast Pro, install and test your webcam.
 - The installation procedure varies per webcam manufacturer.
- Install your printer. The printer must be the default printer for the machine.



- Ensure Adobe Flash is installed within Internet Explorer
 - Visit this page <http://get.adobe.com/flashplayer/> using Internet Explorer
 - If not already installed, please ensure you are installing it via Internet Explorer. Other browsers do not install it system-wide as is required by CertificateBlast.
 - Download the software at the address we sent to you.



Step 2) Installation

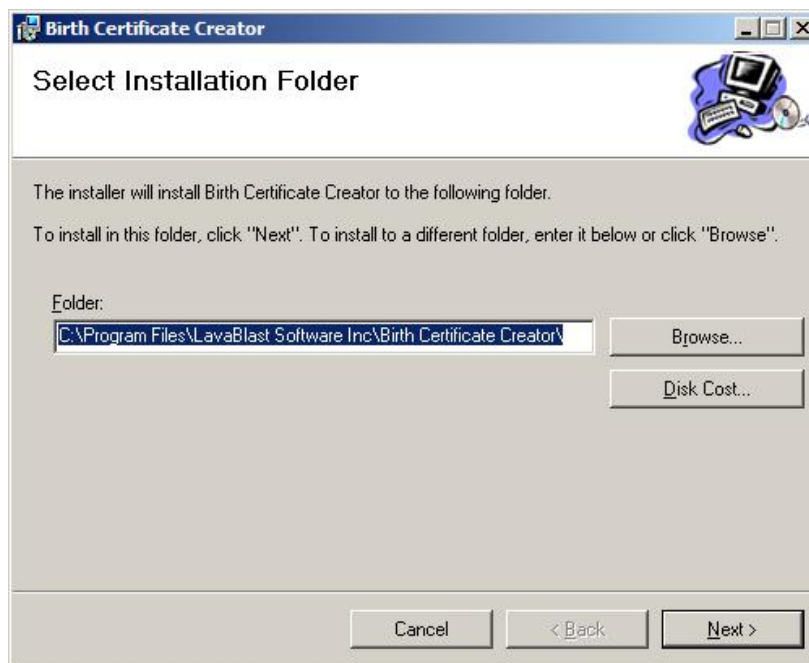
Step 2.1

- Click next.



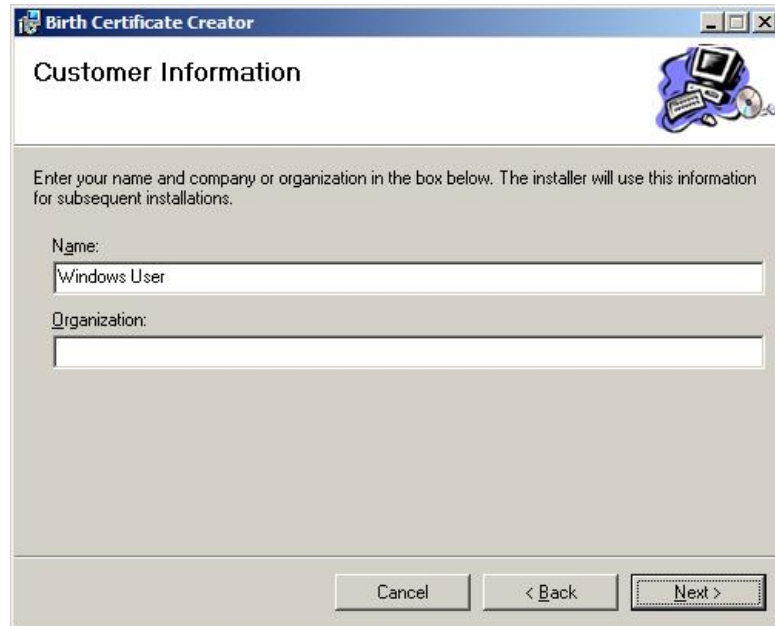
Step 2.2

- Change the path if desired
- Click next



Step 2.3

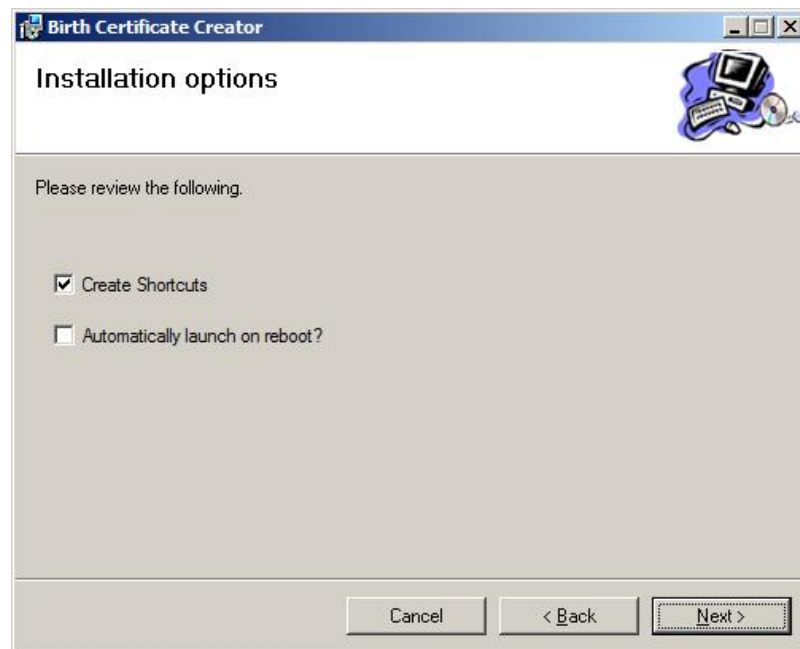
- Enter your name and, under the organization field, enter your store name. Your store name will appear on your birth certificates unless we've configured the software differently. Click next.



The screenshot shows a Windows-style dialog box titled "Birth Certificate Creator" with a sub-header "Customer Information". Below the header is a small icon of a computer and a CD. The main text reads: "Enter your name and company or organization in the box below. The installer will use this information for subsequent installations." There are two text input fields: "Name:" with the text "Windows User" and "Organization:" which is currently empty. At the bottom, there are three buttons: "Cancel", "< Back", and "Next >".

Step 2.4

- Create shortcuts will add links in your start menu. Automatically launch on reboot will launch CertificateBlast when starting your computer, which is desired in a retail store environment. Click next twice.



The screenshot shows a Windows-style dialog box titled "Birth Certificate Creator" with a sub-header "Installation options". Below the header is a small icon of a computer and a CD. The main text reads: "Please review the following." There are two checkboxes: "Create Shortcuts" which is checked, and "Automatically launch on reboot?" which is unchecked. At the bottom, there are three buttons: "Cancel", "< Back", and "Next >".



Step 3) Activation

- If you are running Windows Vista, please run the application as administrator to activate it. (Please see the troubleshooting section).
- The first time you run the application, you will be presented with the following form:



- Write down this activation code.
- Please visit <http://support.lavablast.com> and login using the information we sent you by email.
- Under settings, you will find software licenses.
- Enter the activation code given to you by the application into this form, and it will generate your license key. Write the license key down and enter it in the software. Keep the activation code / license key in your records.
- Simply put, you can only generate one code and this code is valid for a usage license on one computer only.



Troubleshooting - Windows Vista

- When installing the software on Windows Vista, please run the setup as administrator. More information here: <http://www.howtogeek.com/howto/windows-vista/always-start-an-application-in-administrator-mode-on-windows-vista/> .
- You will need to run the executable directly in the installation folder (you can't do this procedure on the shortcut icon we install in the start menu).

